

DENSO

FIXED TYPE 2D CODE SCANNER

QB30

USB model QB30-SU
RS-232C model QB30-SR

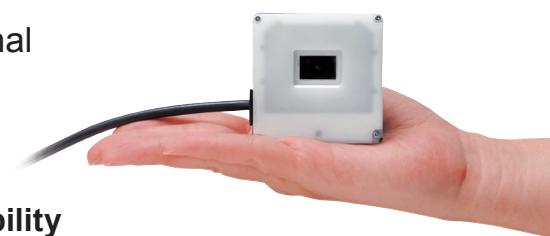


Scans twice faster than the previous model and what's more, it supports scanning of a moving object!

It has a wide scanning range & compact body, enabling it to be installed in a small space!

With its IP54 rating and operating temperature of $-20\sim 50^{\circ}\text{C}$, it can be installed in both an indoor and semi-outdoor environment!

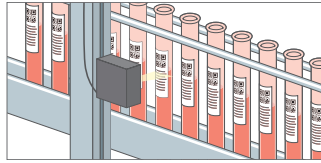
Strictly pursues "installation space saving" and "high Internal environment performance" required for built-on scanners.
New standard for built-on scanners, QB30.



Scan performance

High-speed scanning + moving object scanning

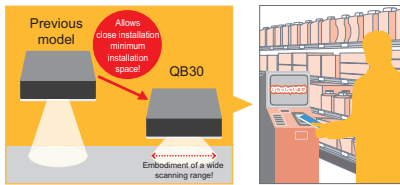
Compared to the previous model^{※1}, it embodied 2 times faster scanning speed. It can also scan moving objects^{※2} such as a factory production line and medical examination equipment, and increase productivity at worksite.



※1. QB20
※2. When an external trigger is used (Only QB30-SR)

Has a wide scanning range and can be installed in a small place

With its compact body and wide-angle lens, it can be installed in a small space without needing to distance itself from a scanning object. It can reduce the installation space when mounting it on to a kiosk terminal, allowing you to install it anywhere that you have room to keep it.



※ It is recommended to use a low-reflection coating plate in case you wish to install a plate on the scanning side.

Batch scanning of multiple codes[※]

※ Support scheduled in June 2012

It can shorten the scanning time through batch scanning up to 8 codes[※] within the scanning range.

※ It supports up to two types of codes

Internal environment performance

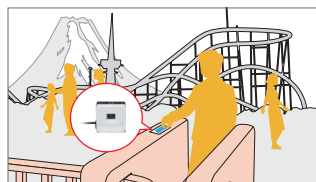
Safety function which blocks the intrusion of dirt and water drop

Materialized IP54, the protection rating of IEC. Shut out ingress of dust at the production line or rainwater at a semi-outdoor. It can be installed safely.



Operating temperature -20~50°C

It supports operating temperature of -20~50°C and can be installed safely at a semi-outdoor entrance gate.



Maneuverability

White LED which can cope with all codes

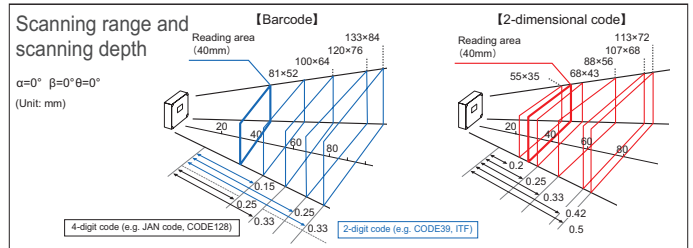
White LED is adopted as the lighting LED, allowing it to read color codes. It minimized glare by using a milk-white material at the lighting unit.



QB30 specification

Type	QB30-SR (RS-232C model)		QB30-SU (USB model)
Scanner unit	Readable code	2-dimensional code	QR code, micro QR code, SQRC, iQR, PDF417, micro PDF417, Maxi code, DataMatrix(ECC200), Aztec, GS1 DataBar Composite(EAN.UCC Composite)
		Barcode	EAN-13(-8/JAN-13(-8)), UPC-A(-E), UPC/EAN(Add an add-on), Interleaved 2 of 5, CODABAR(NW-7), CODE39, CODE93, CODE128, GS1-128, GS1 DataBar(RSS)
	Minimum resolution	2-dimensional code	0.20mm
		Barcode	0.15mm
	Moving speed		800mm/s ^{※1}
	Scanning range		62mm×39mm(Distance from the scan unit: In case it is 40mm)
Lighting		White LED	
	Confirm scan	LED	One (Blue, green, red)
Interface	Interface	RS-232C(Mini D-sub 15-pin female)	USB
	Cable length		0.5m
External input/output	Input	Trigger reset	-
	Output	Scanning OK/NG, contrast OK/NG Sync signal of external lighting	-
Power unit	Rated voltage		5V
	Power		Supplied from the higher-ranking equipment
Supplemental functions	Operating button		1 button (Magic key)
	Batch reading of multiple codes		Maximum 8
	Image storage		Maximum 10
Environmental performance	Operating temperature		-20~50°C
	Protection rating		IP54
Mass		Approximately 120g	Approximately 150g

※1: In case of reading a QR code of a cell size 0.33mm/Ver5 when using an outside trigger



Product constituents

Main body set

- Operation guide ● User's manual [PDF](#)

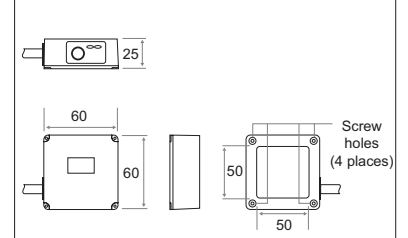
Software

- USB driver [PDF](#)
[Active USB-COM port driver]
- Setup software [PDF](#)
[QB Setting]
- Keyboard emulation software [PDF](#)
[QR_kbf 3.0]
- SQRC setup software
[SQRC Setting]

[PDF](#) You can download the items with this mark from our website for free.

Dimensions

(Unit :mm)



Please refer to the website for the details of the product.

<http://www.denso-wave.com/ja/adcd/>



● External appearance and specification can be changed without notice.
● Contents stated in this catalog is data as of February 2012.

Caution for safe use

● Please carefully read the user's manual before using this product.